

## Fitting an I-Button to a J2 9xx unit

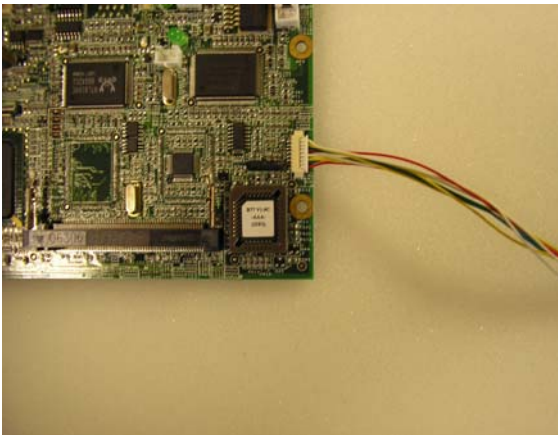


Remove the two front bezel attaching screws located towards the bottom of the back of the unit head.

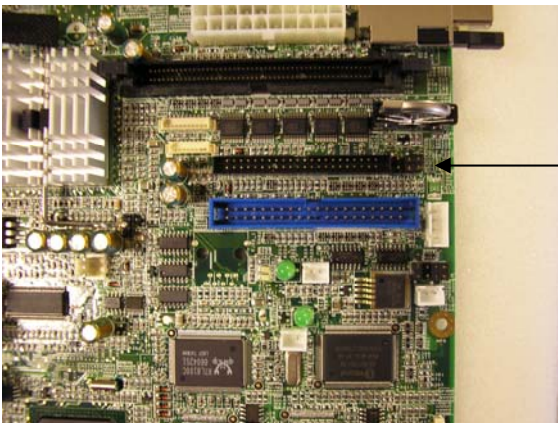
Fit the button to the front bezel and solder the two wires as shown in the photo.



Mount the I-Button circuit board to the front bezel and fit the connectors as shown.



Fit the I-Button cable connector to the main board as shown



Locate the 4 pin jumper J4  
[to the right of the black IDE1 connector]  
and remove both jumpers to enable the I-Button.

Refit the front bezel