

## J2 580 WIFI card installation



Remove the base & then slide out the main board.



Remove the 4 base attaching screws, the MSR blanking plate [or MSR, if fitted] & the small MSR interface board.



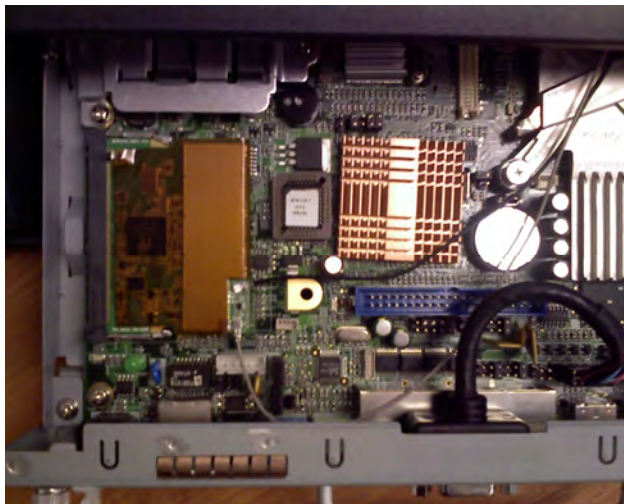
Remove the 2 screws from the back cover & then remove the back cover.

## J2 580 WIFI card installation



Feed the WIFI antenna cables through the metal case & attach the 2 antennae as shown.

Refit the back cover, MSR interface card, MSR blanking plate [or MSR], the 4 base attaching screws & the base.



Connect the WIFI card to the antenna [either cable can go into either connector]. Fit the WIFI card into the mini-PCI slot. Slide the main board back into position; be careful not to trap the antenna cables.

Download & install the WIFI driver

The driver can be found here,  
<http://www.j2retailsystems.com/support/580/WIFI/>