

## Replacing a 615 LCD panel



Place the unit screen side down on a protective mat. Undo the screw securing the base & remove the base.



Remove the 4 base holding screws .

Remove the two back panel screws.

Remove the SSD carrier

Remove the MSR or MSR blanking panel.

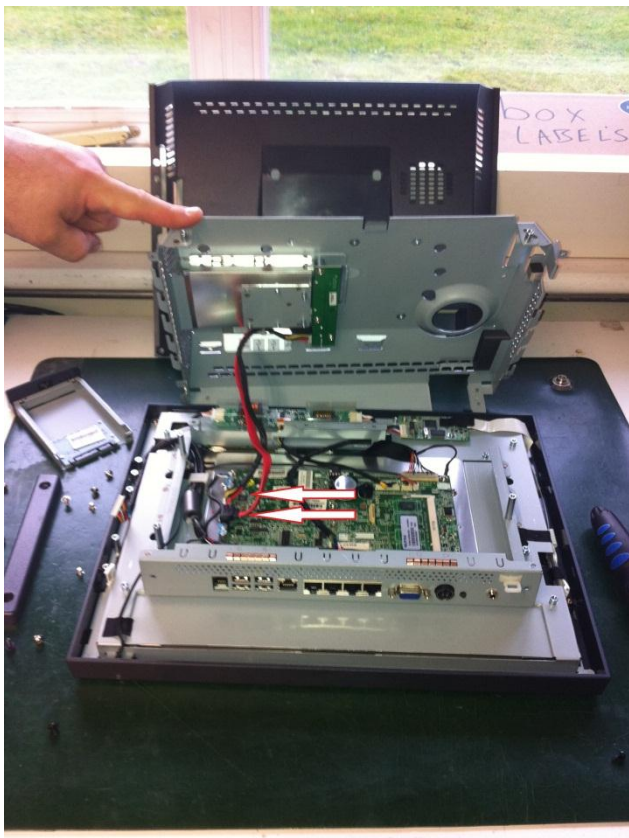
Remove the MSR connection board.

## Replacing a 615 LCD panel



Remove the plastic back panel.

Remove the 11 screws fastening the metal cover over the main board.

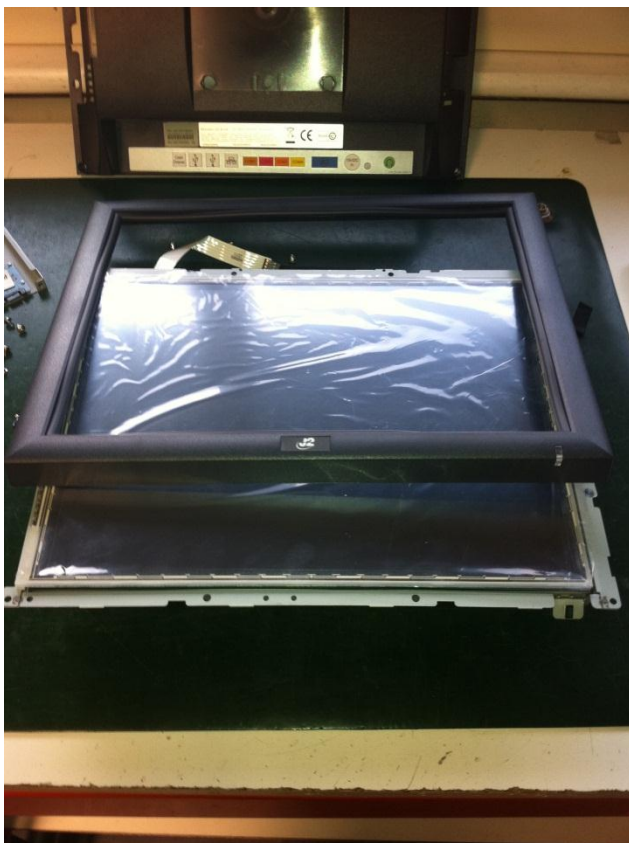


Uplug the SATA cables & remove the metal panel.

## Replacing a 615 LCD panel

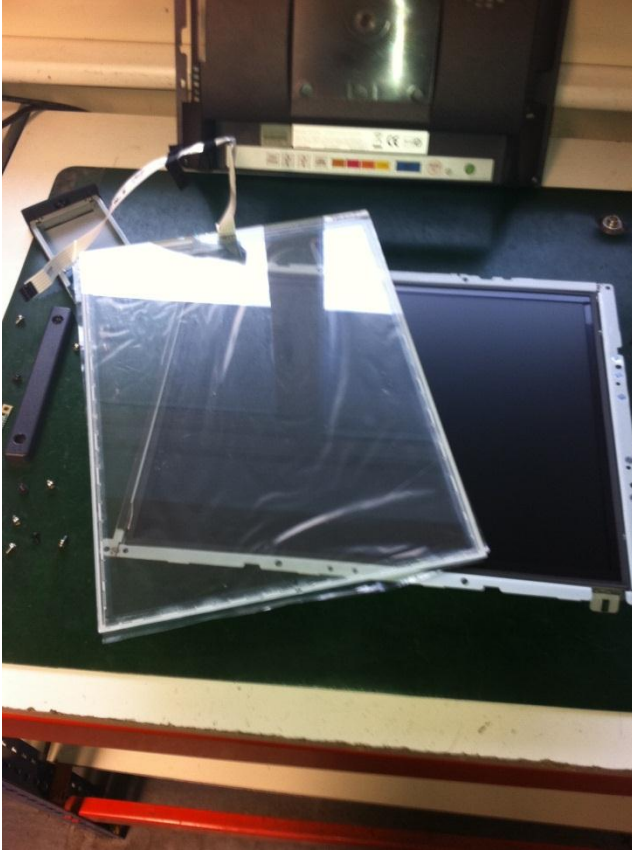


Undo the four connectors shown in the photo.



Turn the unit over & lift off the bezel.

## Replacing a 615 LCD panel

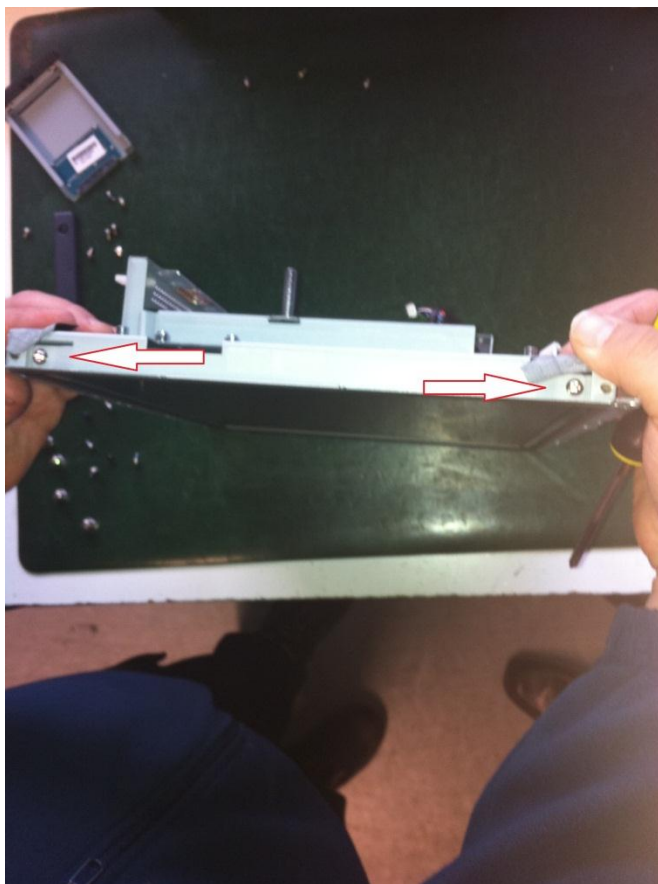


Lift off the touchscreen.

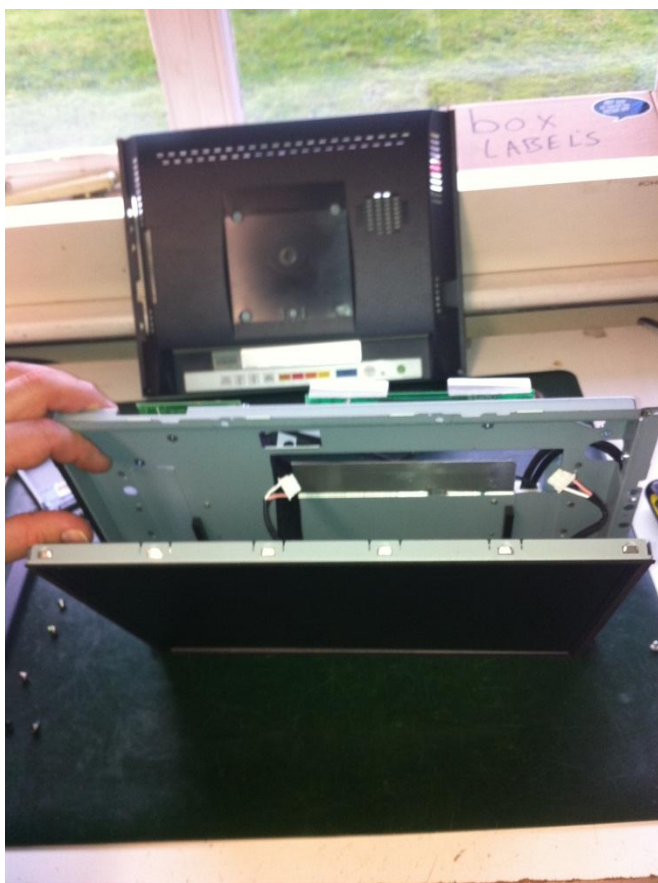


Place the LCD on its edge & remove the two screws as shown in the photo

## Replacing a 615 LCD panel



Turn the LCD over, pull back the black tape & remove the two screws as shown in the photo.



Pull the LCD out of its mounting panel.

Fitting the new LCD is the reversal of the above procedure. Take special care when replacing the touch panel to ensure that nothing gets caught between the panel & the LCD.