

Biometric Reader (fingerprint) Demo Program installation and Usage

Summary

The files included in RTE and the Demo program are for testing purposes only.

System Requirements

- x86-based processor or better
- USB port on the computer where the fingerprint reader is to be connected
- Microsoft Windows XP, 32-bit and 64-bit versions; Microsoft Windows XP Embedded, 32-bit version; or Microsoft Windows Vista, 32-bit and 64-bit versions
- The Demo program and Runtime files require Microsoft .NET Framework Version 2.0 to run. If necessary, install .NET Framework 2.0 prior to following the instructions below. You can download it from the following link:

<http://www.microsoft.com/downloads/details.aspx?FamilyID=0856eacb-4362-4b0d-8edd-aab15c5e04f5&displaylang=en>

Process

1. Download SDK

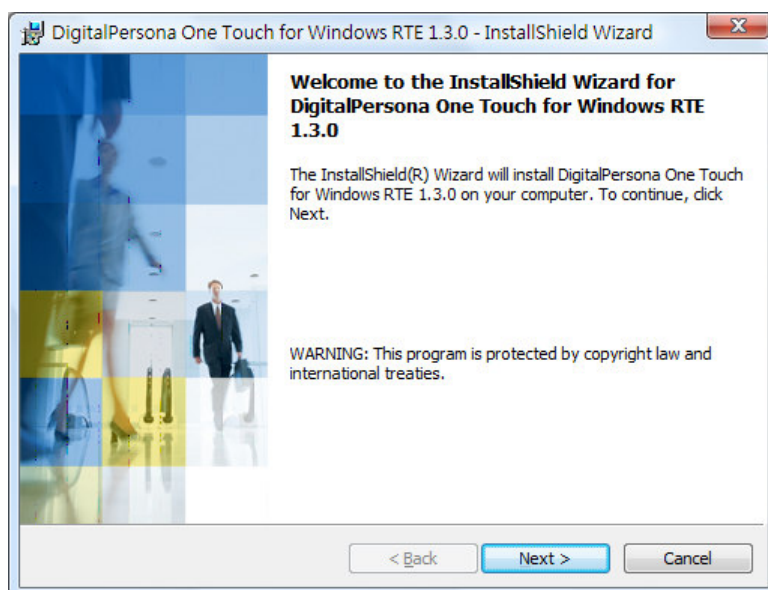
1.1 Download the free DigitalPersona Windows SDK from DigitalPersona's website at <http://buy.digitalpersona.com/>.

Please note that you will have to register at the website to be able to download.

1.2 Unzip the SDK into a folder on your system.

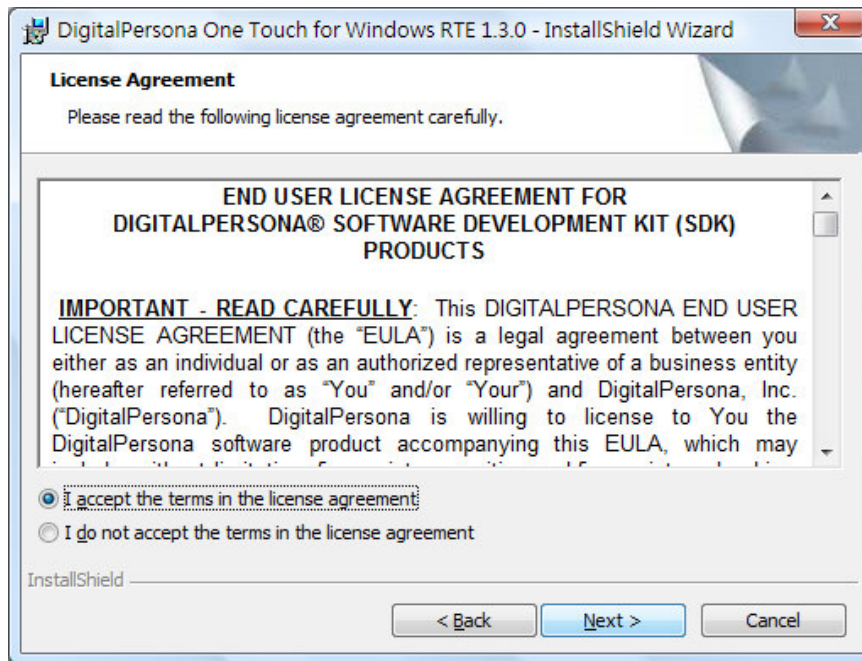
2. Install RTE (Drivers)

2.1 Run Setup.exe in RTE folder



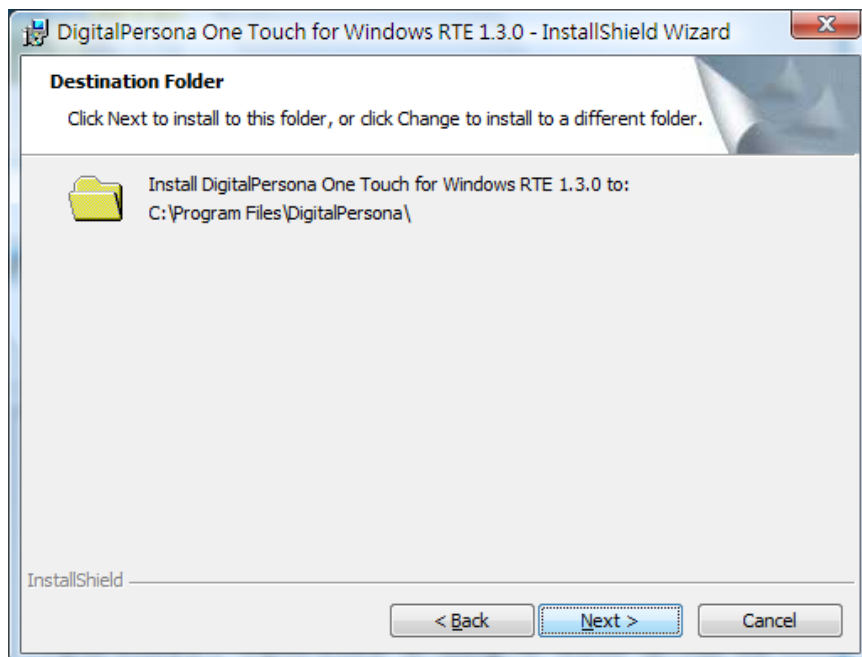
Click Next

2.2 Accept the license agreement



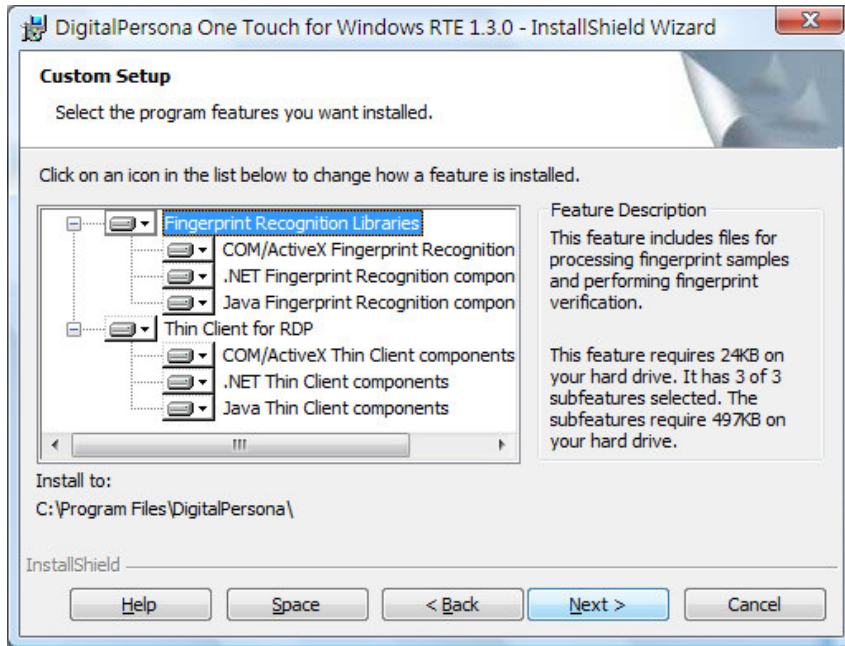
Check "I accept the terms in the license agreement"

2.3 Select destination folder



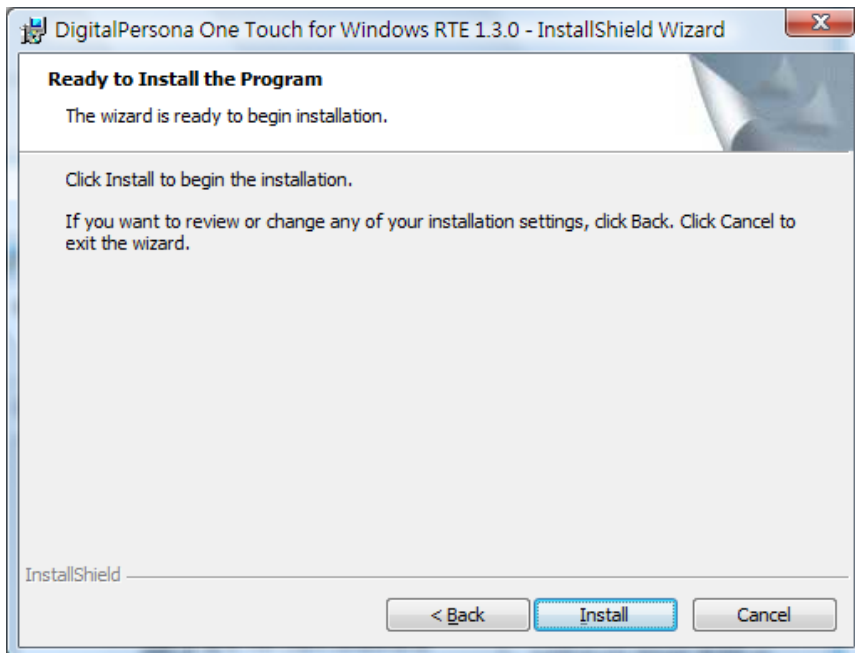
Click Next

2.4 Custom Setup

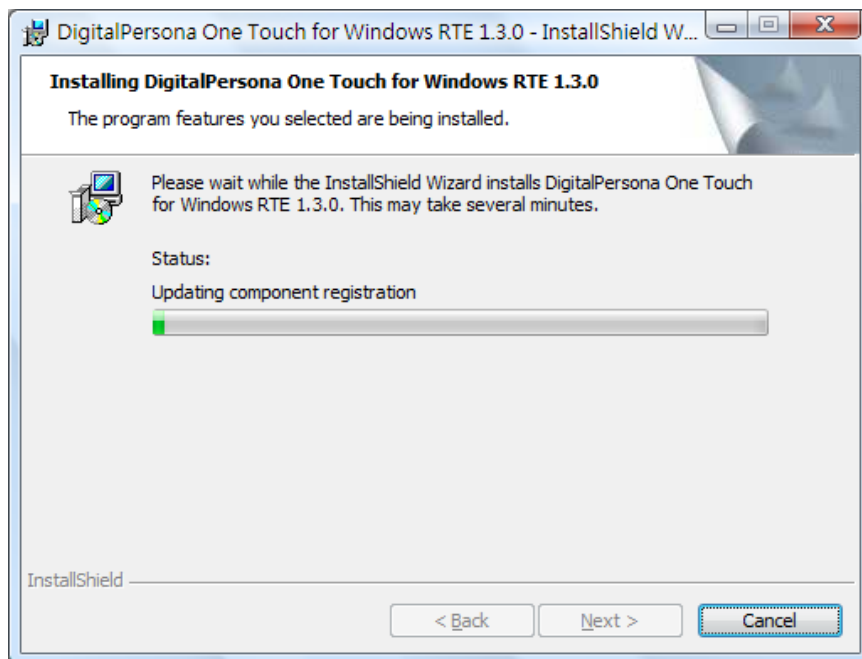


Click Next

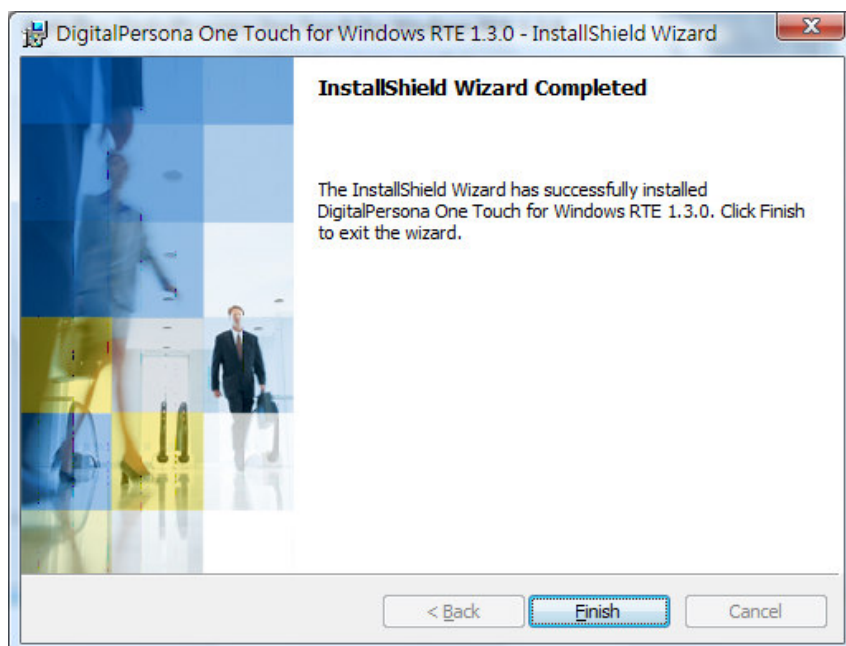
2.5 Install Program



Click Install



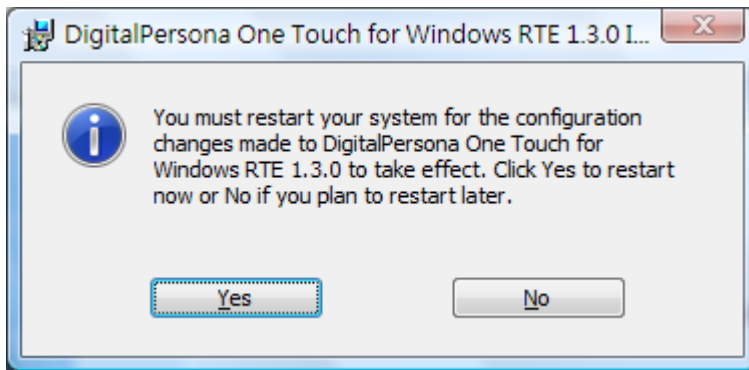
2.6 Installation Complete



Click Finish

2.7 Restart PC

When the installation finished, it will prompt you to restart your system.

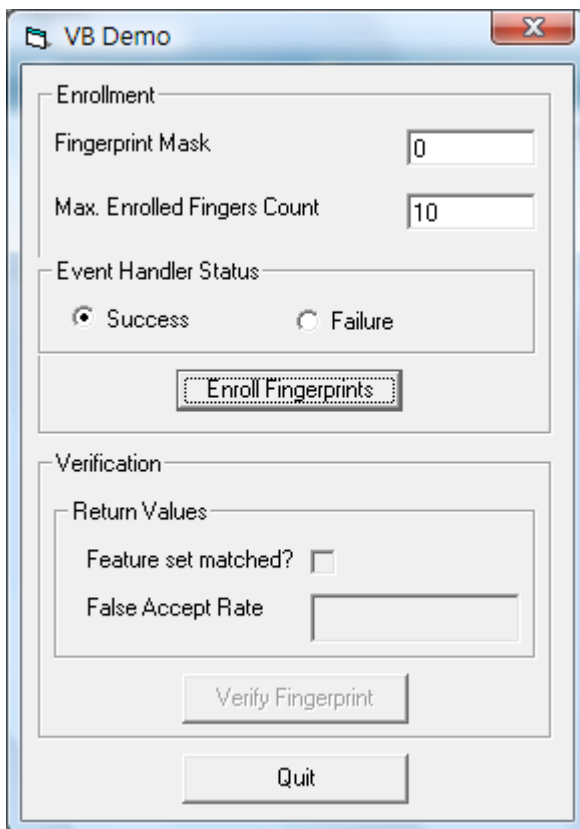


Click Yes

After restart PC, please plug 4500 Reader to PC.

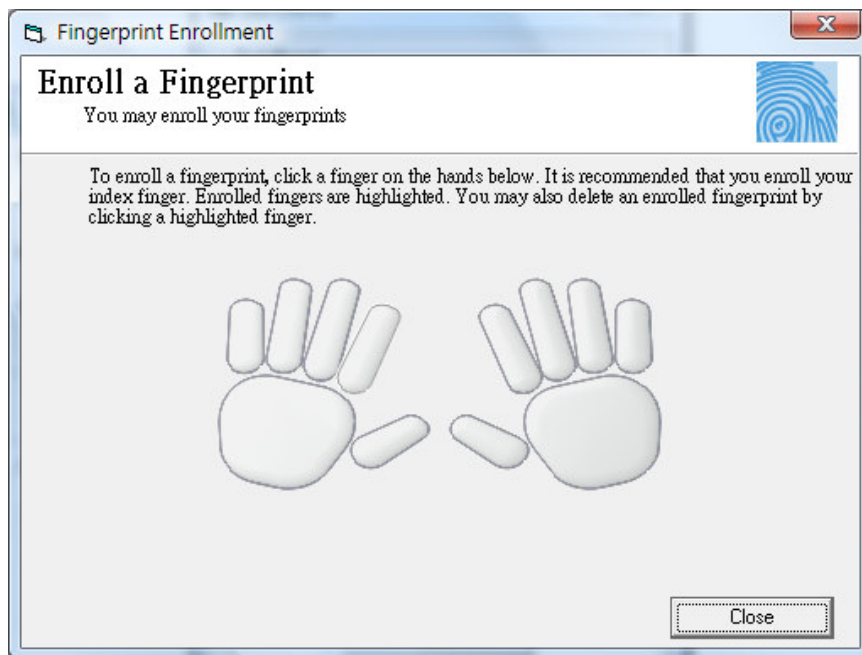
3. Test 4500 Reader with Sample program

3.1 Run UIVBDemo.exe



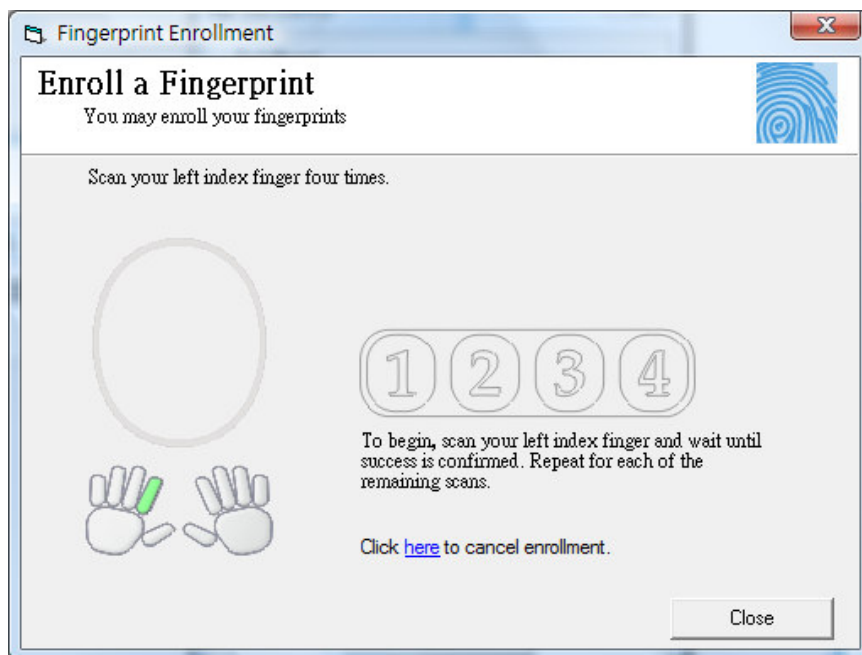
Click Enroll Fingerprints

3.2 Enroll a Fingerprint



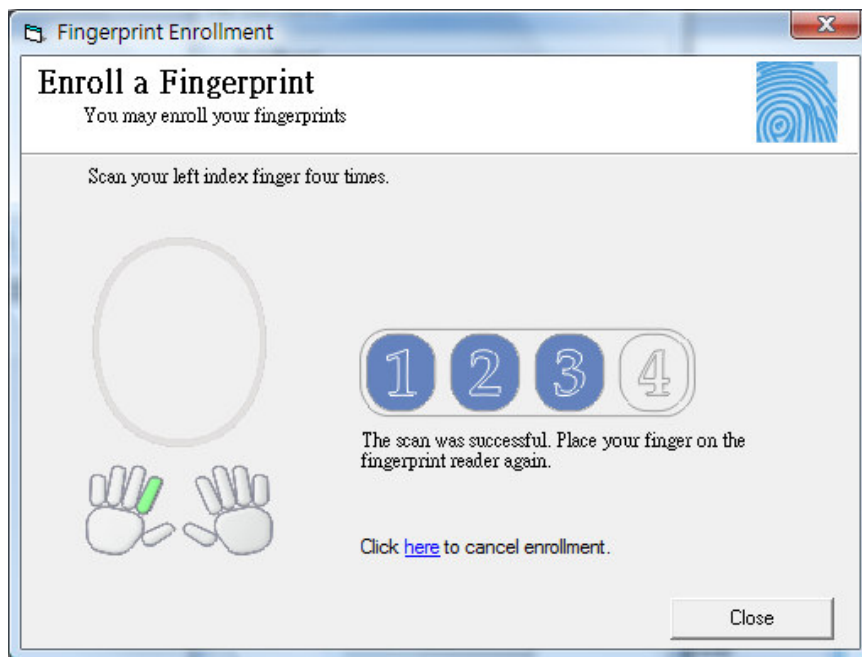
Click a Finger icon to enroll a Fingerprint

3.3 Scan Finger 4 times



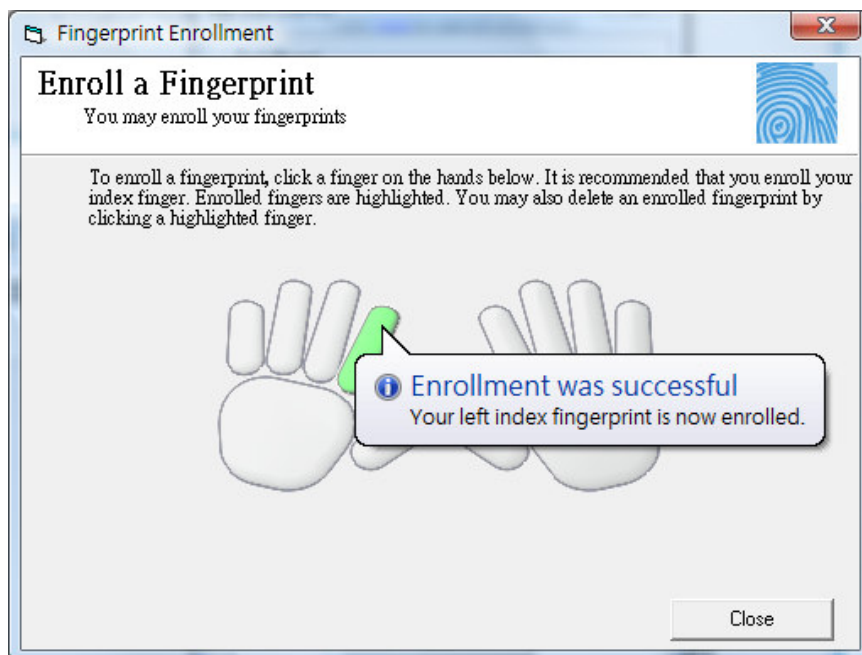
Touch finger 4 times to enroll

(It may require more than 4 times touches to generate the better quality fingerprint template)



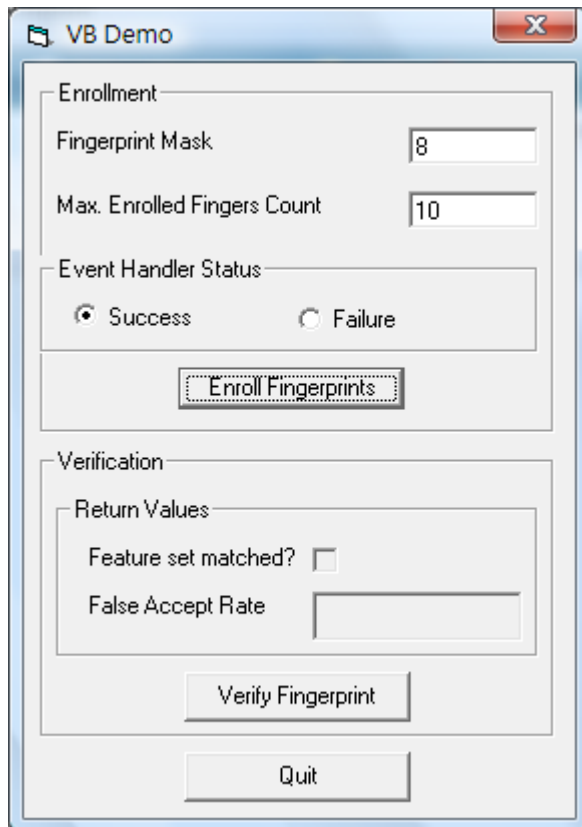
Follow the instruction to scan finger

3.4 Enrollment Success



Click Close

3.5 Verification

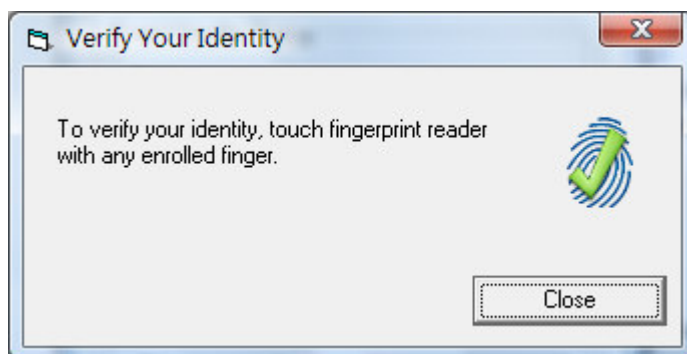


Click Verify Fingerprint

3.6 Press Finger to do verification



Press the Finger which is enrolled



Verification Success



No Match

Click Quit to close the program

