

J2 14.1 LED 2nd Display Fitting Instructions for J2 680

Step 1. Identify required cables



Step 2. Place J2 680 face down on protected surface and remove mounting cover



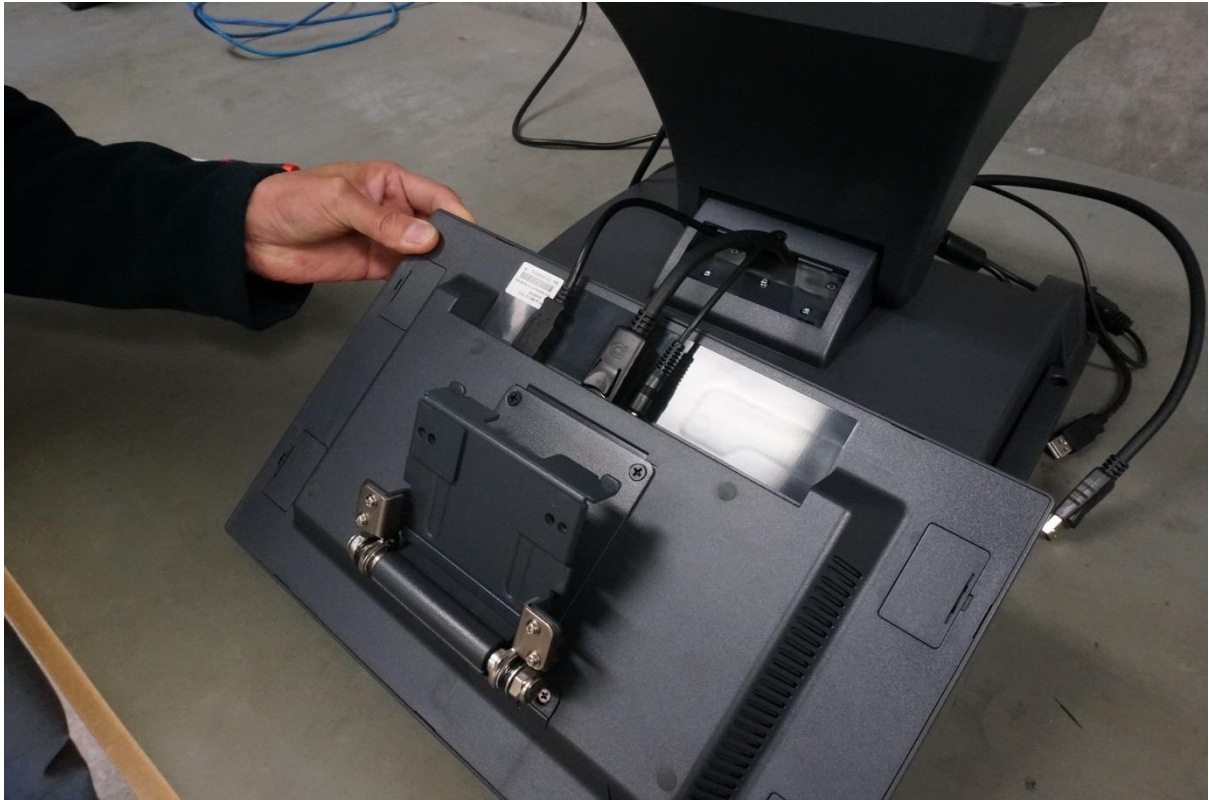
Step 3. Feed Display Port cable through stand



Step 4. Feed Power and USB cables



Step 6. Attached cables to 14" LED Display



Step 6. Fit Display to mounting position on J2 680





Step 7. Secure cables to ports

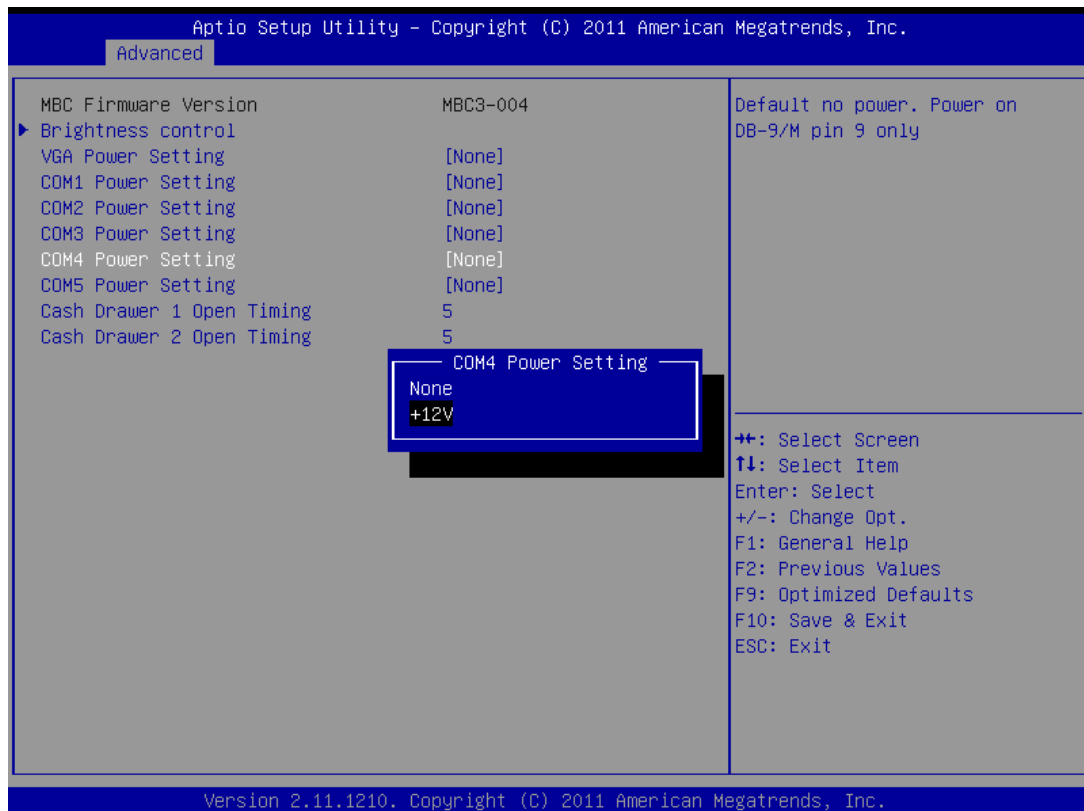


Step 8. Fitting Completed



Step 9. BIOS and software settings.

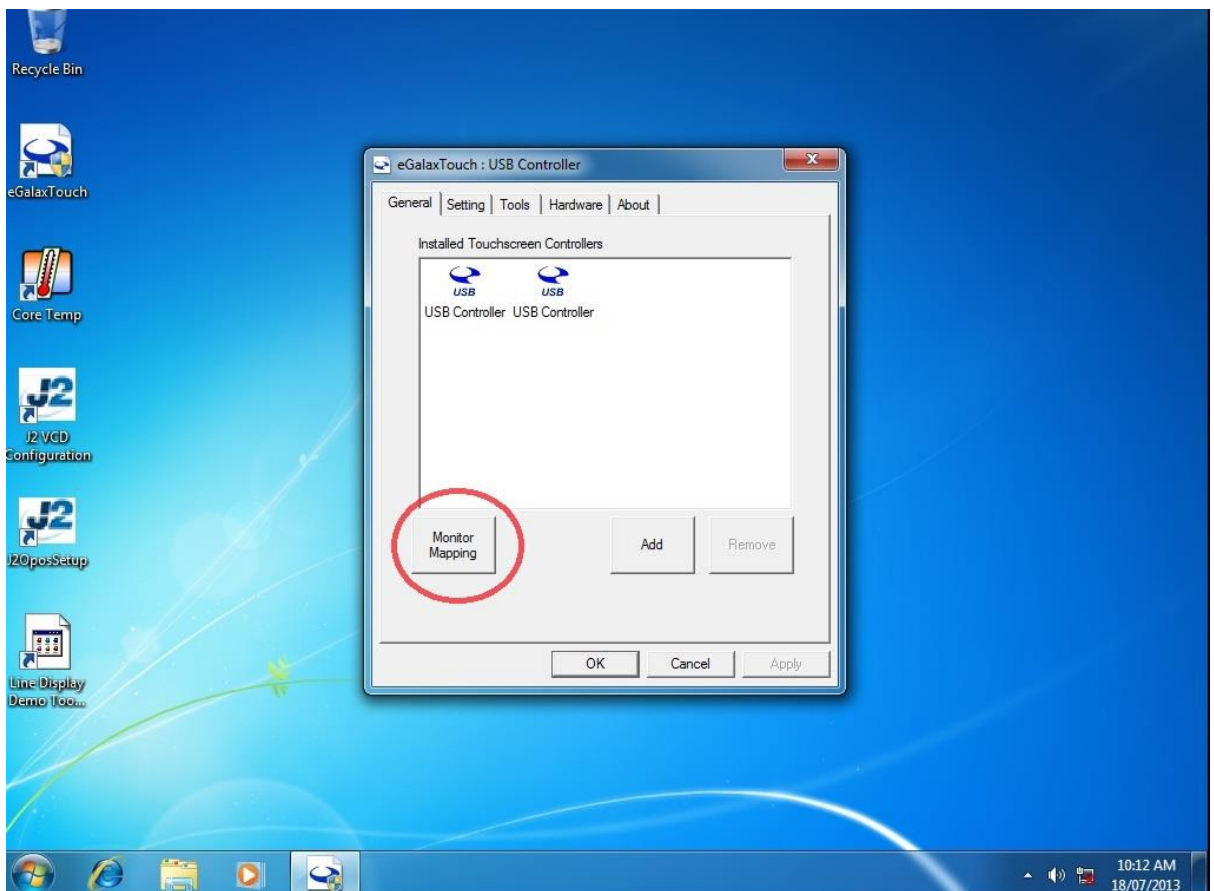
- Enter BIOS and set +12V to comm port



Step 10. Set Multiple displays using Intel Settings



Step 11. Run eGalax touch Utility to setup touch.



Step 12. Follow instruction after pressing Monitor Mapping to identify both monitors

1

>>> Please touch the screen <<<

Press ESC to quit

Press SPACE bar to skip to Next Screen.



Auto skip to next screen

2

>>> Please touch the screen <<<

Press ESC to quit

Press SPACE bar to skip to Next Screen.



Auto skip to next screen

For all J2 Technical Support inquiries contact us on Ph: 02 9584 5222 or submit a technical support request via email to support@j2retailsystems.com.au