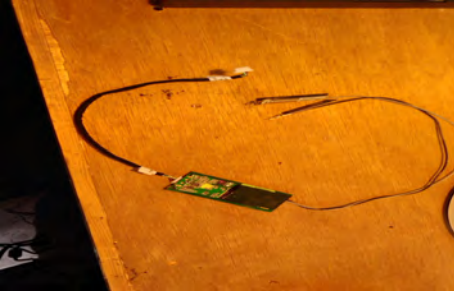


Fitting a wifi card to the J2 650



The wifi card & antennae are fixed onto the inside of the back panel using double sided sticky pads



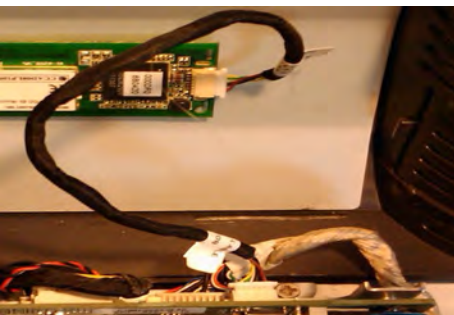
Remove the two screws at each bottom corner of the back of the unit



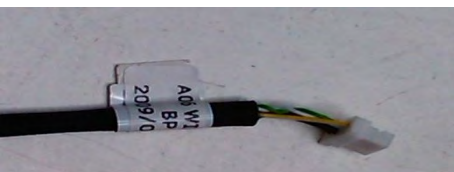
Lift the back cover off the bottom edge of the unit



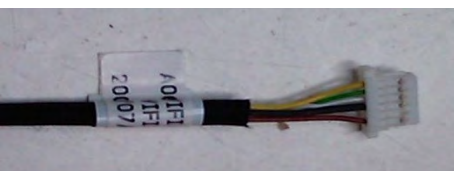
The card & antennae are fastened in the positions shown



The cable fits into the top socket on the back plane as shown.



The cable must be fitted in the correct orientation. The connector marked BP fits to the back plane, The connector marked WIFI fits to the wifi card.



The wifi driver can be downloaded from, www.j2retailsystems.com/support/650/WIFI/