

650 Optional Peripherals

MSR

Overview

The 650 can be ordered with a 3 track MSR. The MSR mounts on the right side of the 650 and uses a front facing MSR slot. This allows the 650 unit to be placed side by side or in tight spaces and still be able to swipe the card. The MSR appears to the software as a wedge type MSR with all data from the MSR being sent to the keyboard port.

The MSR firmware and MSR settings can be changed and updated using the J2 MSR utility without removing the MSR from the unit.

650 with front swipe MSR



Installing the 650 MSR

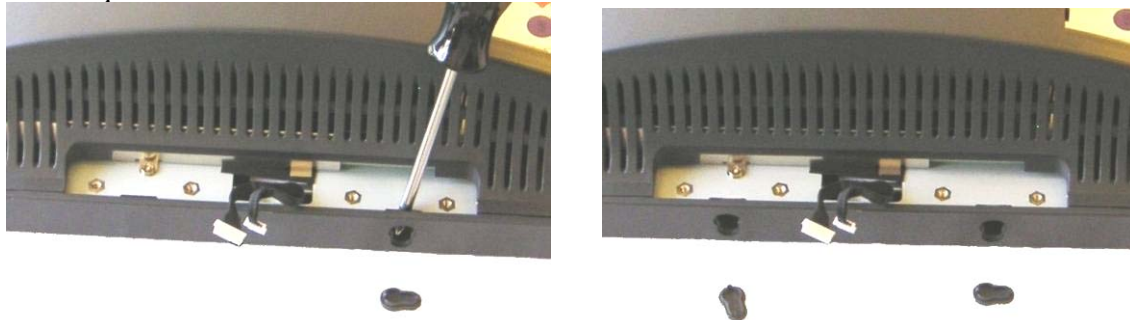
The 650 MSR is installed by first removing the MSR cover plate on the right back side of the unit. Remove the two screws as shown.

Remove MSR cover plate



Two small plastic hole covers need to be removed as shown.

Remove plastic hole covers



Connect the two cable pairs together as shown.



Slide the MSR in to its mounting groove being sure not to pinch the cable. Attach the MSR using the two screws at the locations shown below.

Mounting MSR



You may now power up the 650 and the MSR should be working. For a quick test you can open *Notepad* and swipe a card, the information should appear in *Notepad*. You can now run the J2 MSR utility if you need any custom settings for the MSR.

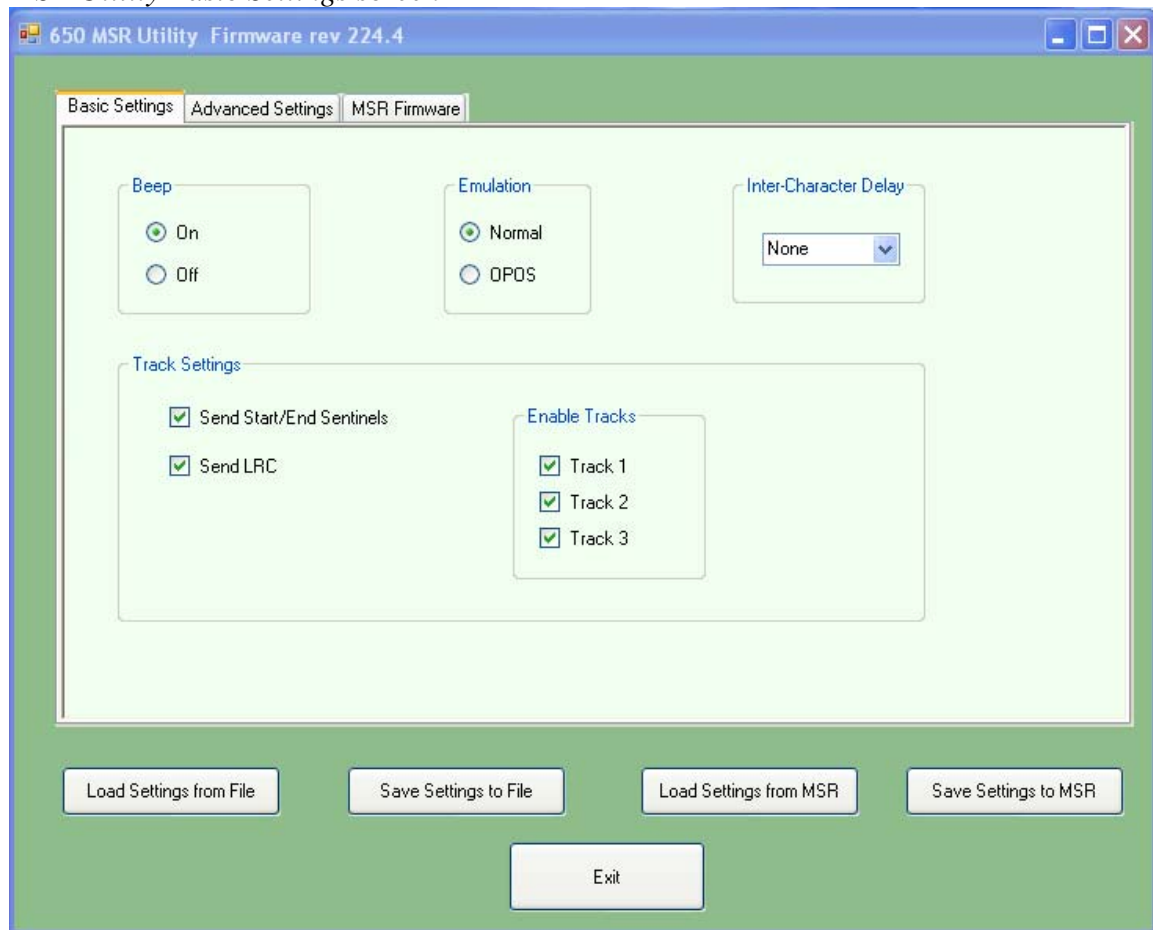
J2 650 MSR Utility

The 650 MSR configuration utility can be download from the J2 web site at <http://www.j2retailsystems.com/support/650/>. You may run the MSR utility from any folder you like.

MSR Utility, Basic Settings

The most common MSR settings that need to be changed are located on this screen.

MSR Utility Basic Settings screen



Beep: This setting will disable or enable the MSR beep tone on a good read. The MSR does not beep if the read had errors.

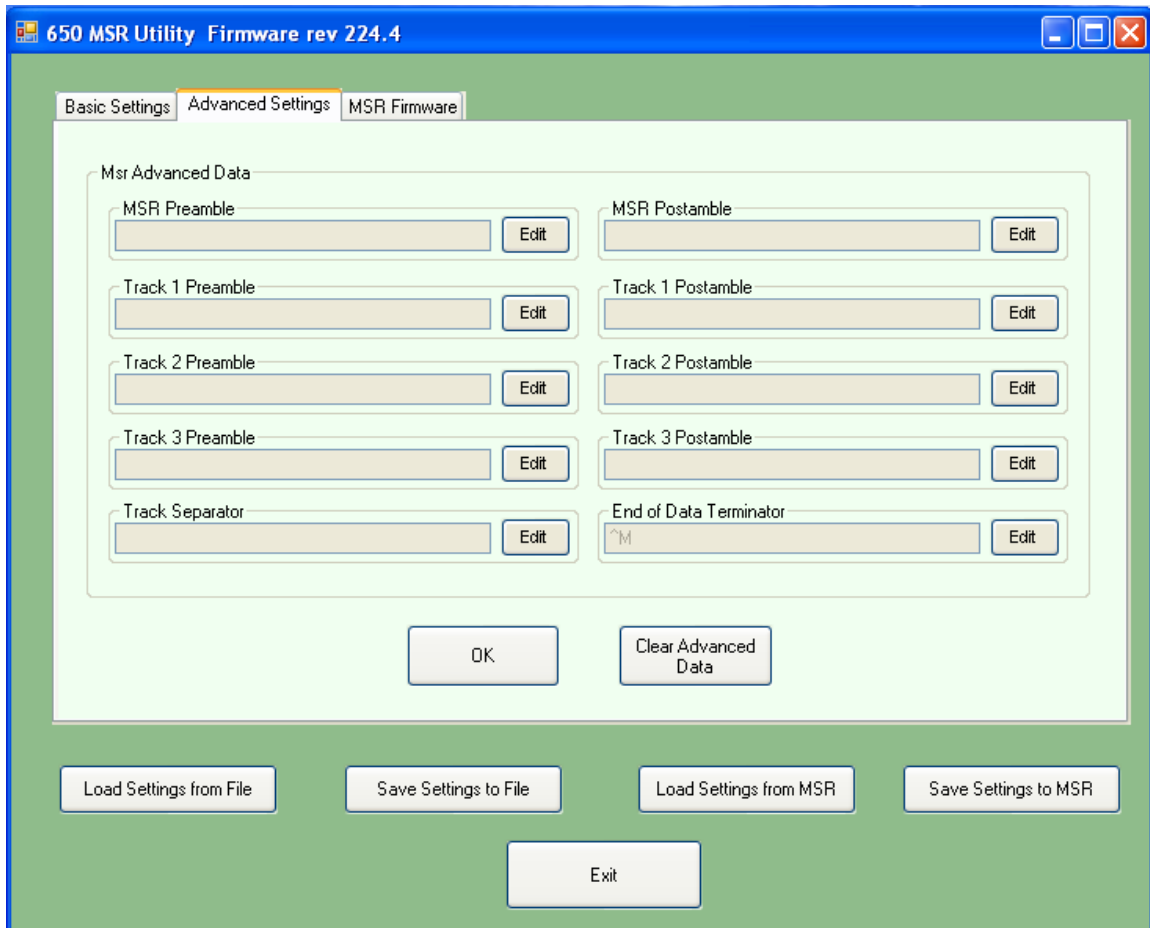
Emulation: Set to OPOS to use the J2 supplied OPOS driver, to Normal for other applications.

Inter-Character Delay: This sets the delay between characters sent by the MSR. The delay is set in milliseconds.

Track Settings: Enable or disable the sending of track data, sentinels and LRC here.

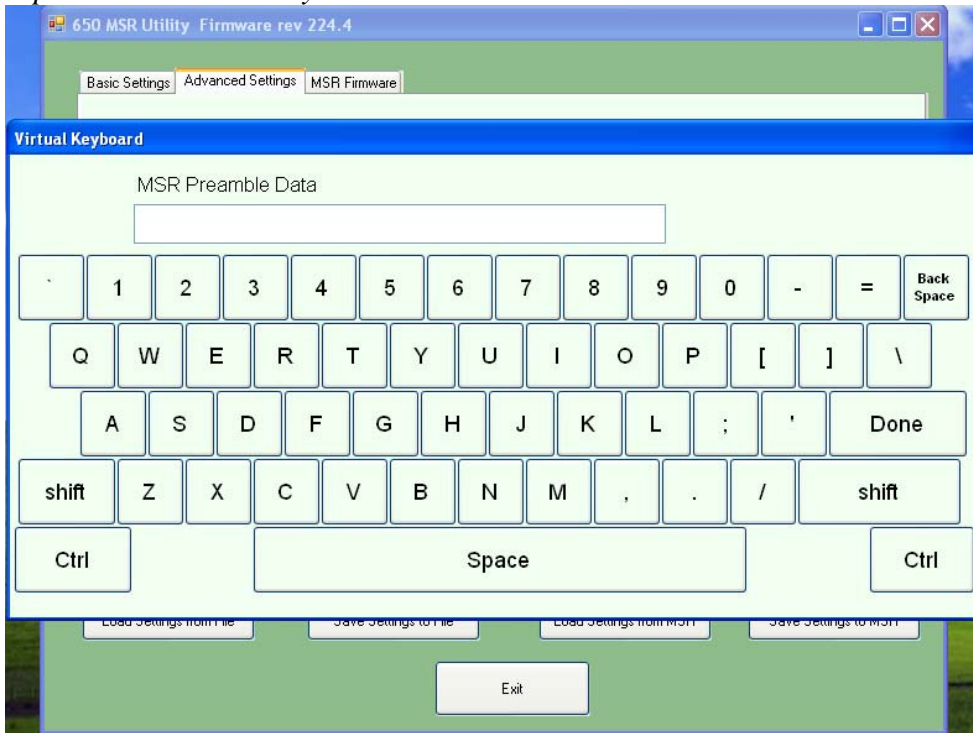
Advance Settings

Preamble and Postambles can be added here in addition to track separators and end of data terminator.

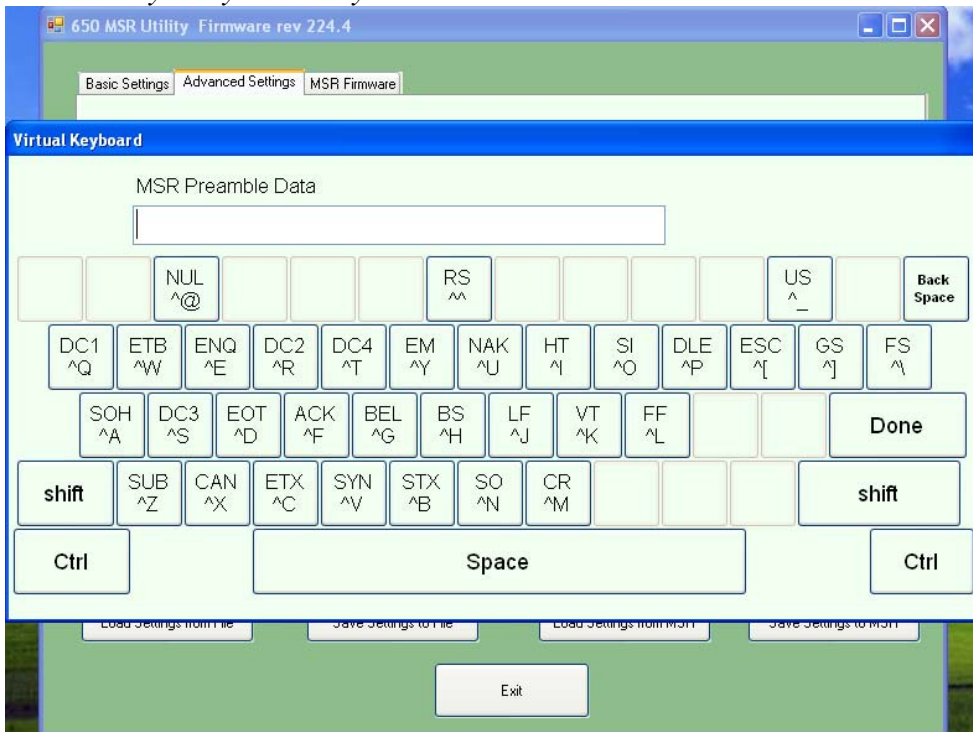


Data may be entered using the touch screen keypad or keyboard. Valid characters are any printable character and all control characters.

Alphanumeric touch keyboard



Control Key entry touch keyboard



MSR Firmware Update

The MSR firmware can be updated in-circuit using this utility. This is to allow options and features to be added to the MSR as required.

