

VGA Drivers Installation Guide

Version: v14.37.50.1.5134 Update: 20100908

Trademarks

Some of the product names mentioned herein are used for identification purposes only and may be trademarks and/or registered trademarks of their respective owners.

Revision History:

Version	Date	Description
v14.37.50.1.5134	Sep., 2010	Release

Remark:

The below installation procedure is based on the version v14.37.50.1.5134 and Using Windows XP as an example, the installation procedure might slightly differ depending on the OS installed.

Driver Installation Procedure

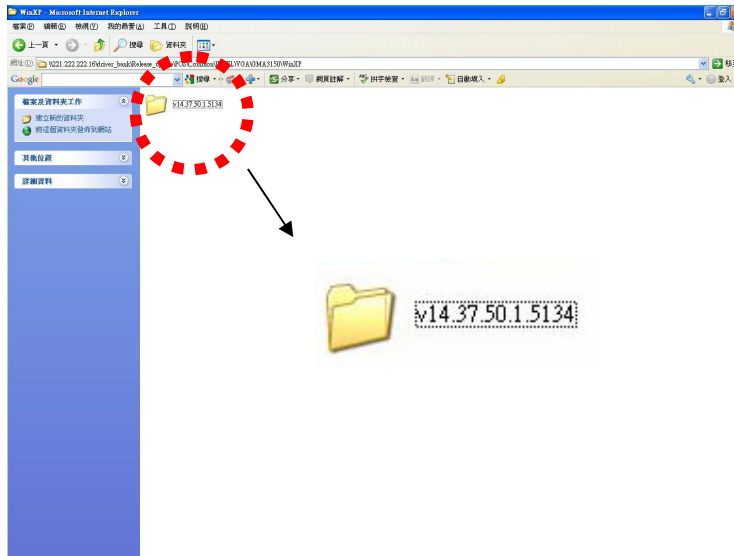
Insert the Driver CD into your CD driver which is prior connected to the system then follow the installation instructions in the Setup Wizard.

Detail instruction as below:

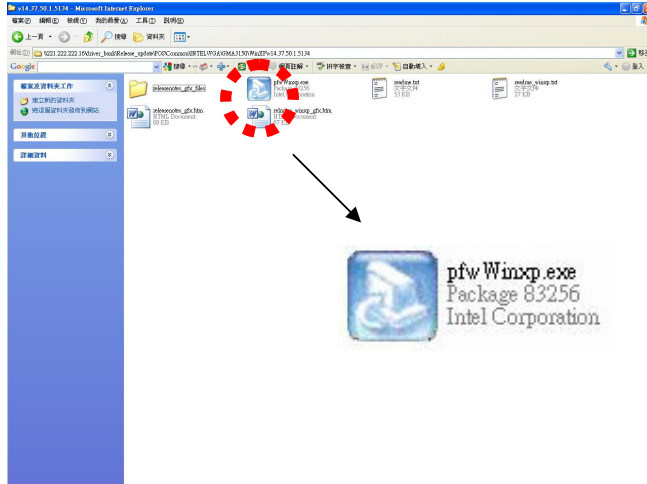
1. You can find the drivers menu in the attached driver CD, please click the <WinXP> in the <VGA> section. The procedure might slightly differ depending on the OS version installed.

Function	OS	Note
VGA	WinXP 	 Installation Guide
	WinXP (64bit)	
	Vista	
	Vista (64bit)	
	Win7	
	Win7 (64bit)	
	Linux	

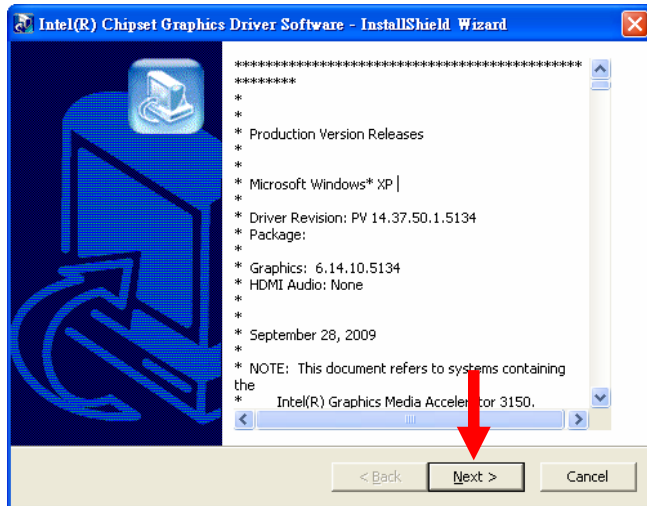
2. Double click on the folder < v14.37.50.1.5134 >.



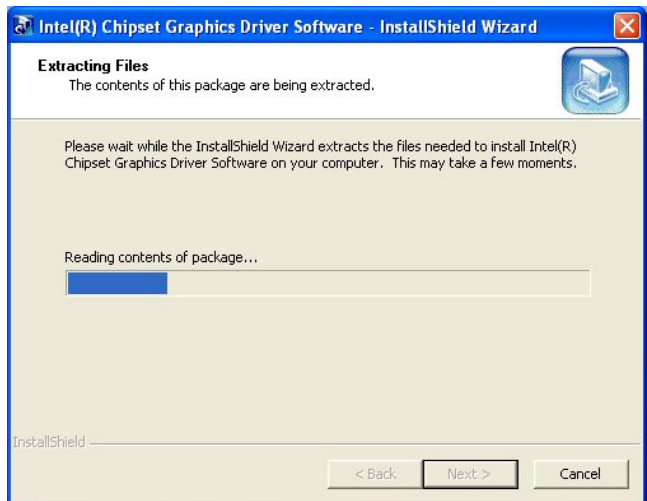
3. Double click to run < pfwWinxp.exe>.



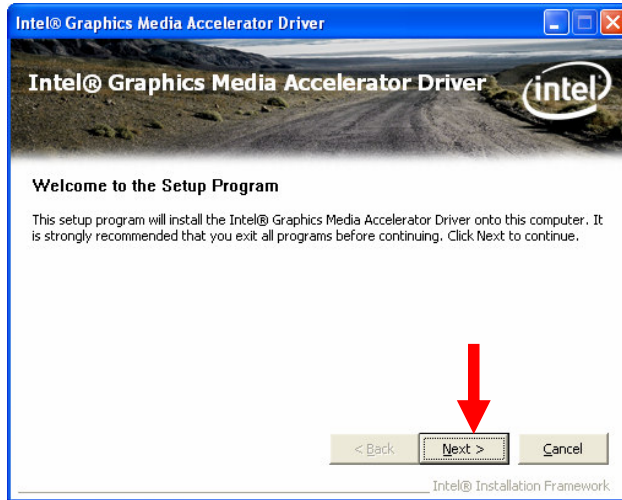
4. Click <Next> to run the InstallShield Wizard.



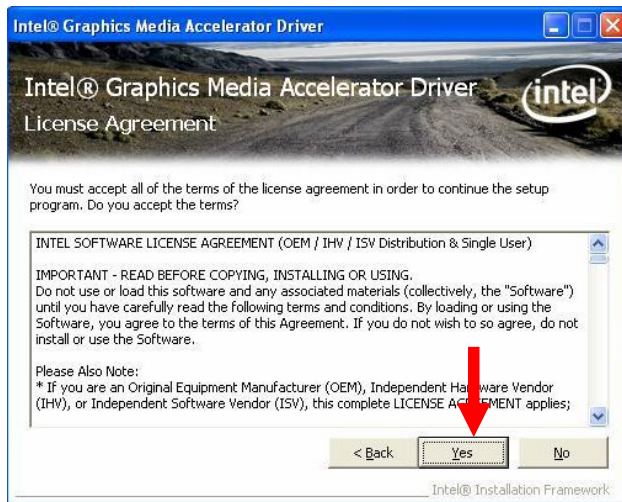
5. Files are extracting.



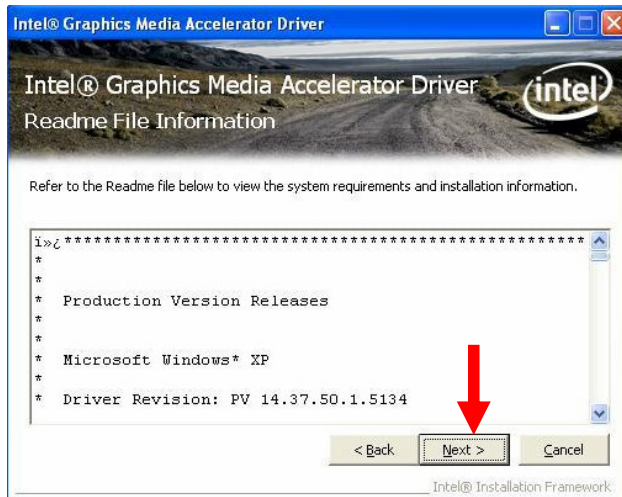
6. Click <Next> to the Setup Program.



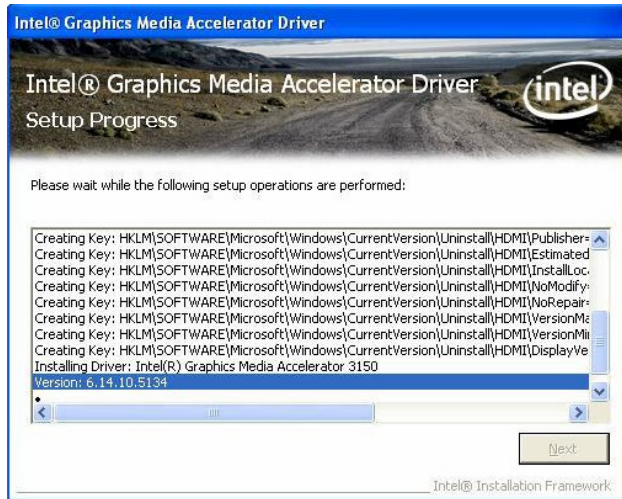
7. Click <Yes> to accept the License Agreement.



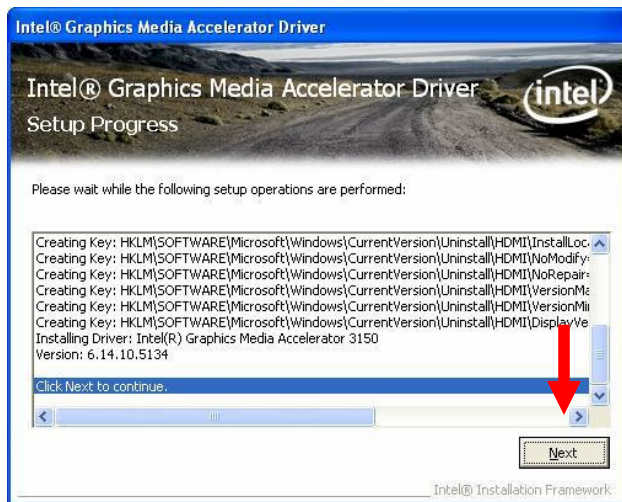
8. Click <Next>.



9. Setup program is running.



10. Click <Next> to continue.



11. Select <Yes, I want to restart this computer now>, then click <Finish>.

