

Fitting an internal WIFI card to a 615



Remove the base.

Remove the two screws in each corner of the back panel, remove the HDD, remove the MSR [or MSR blanking plate, remove the MSR connecting board, remove the four base mounting screws

Finally, remove the Plastic cover

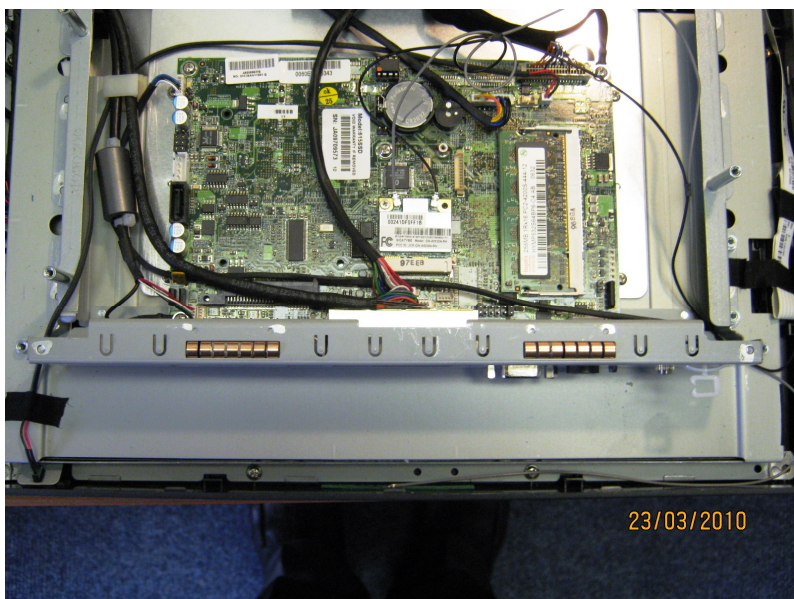


Remove the 10 screws holding the metal cover in & remove the cover.



Fit the WIFI card as shown in the photo.

Fitting an internal WIFI card to a 615



Guide the antennae cables through the gap in the corner of the metal cage as shown in the photo.



Stick one antenna to the centre of the bottom edge of the unit making sure that it's mounted below the plastic mounts for the back cover



Stick the other antenna underneath the touchscreen cable on the side of the unit.

Tape the cables to the metal cage.

Refit the metal cover, the plastic cover & the base.

The driver & utility can be found here, www.j2retailsystems.com/support/615/wifi